

Along the LINE

APRIL 2024

For members of
Edgecombe-Martin County EMC

Clay 2024 Youth Tourist

Hannah Clay of Macclesfield was selected by Edgecombe-Martin County EMC as the winner of the 2024 Electric Youth Tour Contest.

Hannah will attend this year's event in Washington, D.C., in June. The Washington Youth Tour is a program offered by electric cooperatives throughout the nation to high school juniors from their co-op membership. The winner is selected each year through an essay contest, where applicants choose one of five available topics to write about.

The Youth Tour gives high school students the opportunity to network with more than a thousand students from across the country. Participants will join together in our nation's capital to see our legislature in action. Students will also learn about electric cooperatives and the important role they play throughout their communities.

Hannah is the daughter of Kelli and Eric Clay and is currently a junior at Edgecombe Early College, where she is involved in Beta club, student council, church youth group and much more.

Hannah said, "I'm thrilled about joining the Youth Tour because of the opportunities it presents and the valuable life experiences it offers," she expresses. "Exploring Washington, D.C., will provide me with exposure to the capital and opportunities that are unique and unmatched."



Holiday Closing

Edgecombe-Martin County EMC will be closed on Friday, March 29, in observance of Good Friday.

Payments after office hours and on holidays can be made at the:

- Kiosk under the drive-thru canopy
- Calling our automated telephone service at 1-855-356-6358
- Placed in the night deposit box
- Online bill-pay by logging on to ememc.com

Teachers, Apply Now for Your Bright Ideas Grant

It's that time again! Edgecombe-Martin County EMC kicks off its Bright Ideas Education Grant program and begins accepting applications from innovative educators for the 2024-25 school year on April 1.

Edgecombe-Martin County EMC is dedicated to supporting the local communities we serve, and the Bright Ideas grants provide a mechanism for us to assist teachers in making a positive impact on our students. These grants offer educators the opportunity to access new resources, energize their classrooms, and inspire their students. We firmly believe that investing in the education of our future leaders is a paramount commitment.

Bright Ideas grants are open to K-12 teachers for innovative projects across all subjects. Teachers can apply individually or as a team through a straightforward online application process. The application window is from April 1 to Sept. 15, and those who submit by the early bird deadline of Aug. 15 will be automatically eligible to win one of five \$100 Visa gift cards. Teachers with creative ideas for dynamic classroom projects that bring learning to life can find more information and submit their applications at ncbrightideas.com.



2023 Bright Ideas winner Rachel Wells from GW Bulluck with principal Melissa Altemose and Edgecombe-Martin County EMC representative Monica Speight.

Celebrating Line Technicians on April 8

You've likely noticed Edgecombe-Martin County EMC crews out and about, working on power lines and other electrical equipment in our community.

While it takes each employee across all departments to keep operations running smoothly at Edgecombe-Martin County EMC, one of the more visible jobs is that of a line technician. It's no secret that a line technician's job is tough—but it's a job that's essential and must be done, often in challenging conditions. This month, as we celebrate Line Technician Appreciation Day on April 8, we want to share some facts about electric line technicians with you.

Electricity travels along a network of wires and poles to power our homes and businesses. Most of the time, this is a seamless journey. Still, occasionally the path of electricity is disrupted by obstacles like fallen tree branches, animals, or an equipment malfunction—and line technicians are responsible for restoring that connection no matter the weather or time of day. Electric line technicians are on call 24/7 in case severe storms, or other circumstances that cause a power outage. Line technicians work with high-voltage electricity, often at great heights, in all kinds of weather conditions, such as snow, wind, rain, ice and extreme heat and cold.

The work required to maintain the power grid is physically demanding. Our line technicians undergo extensive training and follow numerous protocols to ensure safety

as they maintain our lines and restore power. In addition to serving their communities, line technicians are also called on to provide aid across the state and nation following major storms and during other times of need. This commitment to "Cooperation Among Cooperatives" is one of the core principles that demonstrates the true strength and character of the cooperative network.

Although everyone at Edgecombe-Martin County EMC works hard to provide reliable service, we salute our line technicians who work around the clock to keep the power on. Their safety, as well as yours, is our top priority.



lines FROM SAMMY CLARK LINES FROM THE ROW COORDINATOR

As we approach the season of planting trees and bushes in our yards, it's crucial to be aware of our surroundings. Whether our goal is to create windbreaks, enhance shade, reduce carbon in the environment, or simply beautify our landscape, we must not overlook a fundamental aspect—ensuring the safe placement of tall-growing trees away from power lines.

Each year, we conduct routine maintenance of trees and other vegetation along nearly 400 miles of overhead rights-of-way, out of 1,480 miles of distribution lines and 20 miles of transmission lines. Our vegetation management activities are essential to maintain safe, reliable, and affordable electric service to our members.

Reflecting on the challenges of the past year, it's evident that trees played a significant role in power outages, constituting the primary cause with 148 incidents. The second and third causes were animals (92 outages) and weather-related issues (52 outages).

When it comes to planting trees, it's imperative to recognize that their location can profoundly impact the

integrity of power lines, influencing the reliability and safety of our electrical system. To mitigate potential issues, adhere to the guideline of planting large trees at least 35 to 40 feet away from the center of power lines. This ensures a 10 to 15 feet clearance for mature trees with a sprawling branch span of 40 feet in diameter. For new small trees and large shrubs, they can be planted within 35 feet of power lines, but their height should not exceed 15 feet.

Edgecombe-Martin County EMC works hard to provide you with safe, reliable, and affordable electric service. You can help by following these few simple guidelines when managing the trees on your property. Being aware of these dangers and how to avoid them can keep you, your home and the trees safe.

Sammy Clark

Sammy Clark

Congratulations to Briley and Hardison

We are thrilled to announce the promotions of two exceptional individuals at Edgecombe-Martin County EMC. Join us in congratulating Cameron Briley and Thomas Hardison on their well-deserved advancements to the position of 1st Class Line Technician.

Cameron Briley began his journey with us in July 2022 as a 3rd Class Line Technician. Through unwavering dedication and a proactive approach to skill enhancement, he has ascended to his current role. Cameron's success is a testament to his commitment to personal and professional growth, showcasing the qualities that make him a valuable asset to our team.

Thomas Hardison started at Edgecombe-Martin County EMC in 2019 as an intern. His commitment to excellence, coupled with a proactive career approach, has earned him the promotion to 1st Class Line Technician.

Congratulations to you both on this significant achievement! We look forward to witnessing your continued success at Edgecombe-Martin County EMC! At Edgecombe-Martin County EMC, we take pride in our employees' commitment to ongoing education and on-the-job training. Both Cameron and Thomas, like our other Line Technicians, attend classes at Nash Community College, showcasing our dedication to fostering a culture of continuous improvement and learning.



Cameron Briley (left), Thomas Hardison (right)

Statement of Non-discrimination

In accordance with Federal civil rights law and U.S. Department of Agriculture (USDA) civil rights regulations and policies, the USDA, its Agencies, offices, and employees, and institutions participating in or administering USDA programs are prohibited from discriminating based on race, color, national origin, religion, sex, gender identity (including gender expression), sexual orientation, disability, age, marital status, family/parental status, income derived from a public assistance program, political beliefs, or reprisal or retaliation for prior civil rights activity, in any program or activity conducted or funded by USDA (not all bases apply to all programs). Remedies and complaint filing

deadlines vary by program or incident.

Persons with disabilities who require alternative means of communication for program information (e.g., Braille, large print, audiotope, American Sign Language, etc.) should contact the responsible Agency or USDA's TARGET Center at (202) 720-2600 (voice and TTY) or contact USDA through the Federal Relay Service at (800) 877-8339. Additionally, program information may be made available in languages other than English.

To file a program discrimination complaint, complete the USDA Program Discrimination Complaint Form, AD-3027, found online at <http://www.ascr.usda.gov/>

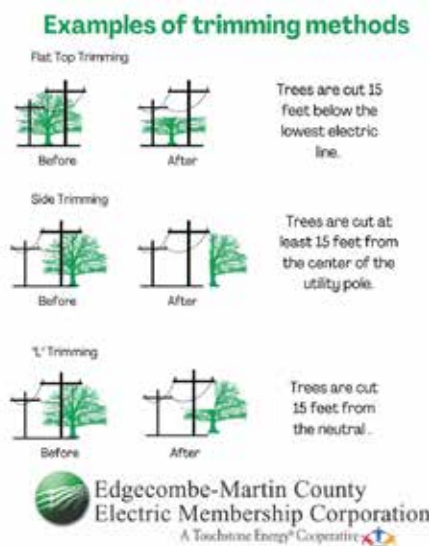
complaint_filing_cust.html and at any USDA office or write a letter addressed to USDA and provide in the letter all of the information requested in the form. To request a copy of the complaint form, call (866) 632-9992. Submit your completed form or letter to USDA by:

(1) mail: U.S. Department of Agriculture
Office of the Assistant Secretary for Civil Rights
1400 Independence Avenue, SW
Washington, D.C. 20250-9410

April Rights-of-Way

In order to provide safe, affordable, and reliable electrical service, we maintain the rights-of-way under and around our power lines. We do this through rights-of-way and vegetation management. This requires pruning, removing, and cutting brush to prevent vegetation from interrupting your electric service.

Throughout April, Burford's Tree will utilize the sky trim, buckets and bushhogging equipment, in the Belvoir and Conetoe area, and various hotspots on the system.



Along The LINE

ememc.com

Board of Directors

Bert Pitt, President
Jimmie Jernigan, Vice Pres.
Wayne Harrell, Treasurer
Norman A. Roberson, Secretary
Billy Trevathan
Rejeanor Scott
Harold Thompson
Edward B. Simmons, Attorney

CEO

Winston T. Howell

Editor

Monica Speight
Hwy. 33 East, P.O. Box 188
Tarboro, NC 27886
252-823-2171 • 1-800-445-6486
Office Hours: 8 a.m.–5 p.m. (M–F)