



Along the LINE

October 2022

For members of
Edgecombe-Martin County EMC

Martin County School's Professionals Development Day

As an electric cooperative, Edgecombe-Martin County EMC is committed to serving its communities. We view supporting education as a vital part of enhancing the lives of those we serve.

We offer scholarships and grants to local students and teachers as well as provide classroom demonstrations on electrical safety. We are strong supporters of STEM education and actively participate in career days and career academies at area schools.

Recently, Edgecombe-Martin County EMC participated in Martin County School's Professionals Development Day discussing career development. Edgecombe-Martin County EMC encourages students to plan their educational path, in advance, in order to complete appropriate classes and programs that will prepare them as a competitive, viable job applicant in the future. Building awareness at an early age is imperative for our youth. We met with the teachers at Martin County to raise awareness of career opportunities at Edgecombe-Martin County EMC, as well as discuss the skills and education needed to be successful in those careers.

As jobs evolve and technologies advance, Edgecombe-Martin County EMC will continue to provide resources that support academic, technical, and employability skills to position students for



Lisa Tolson at the Innovation Center in Martin County for the Martin County School's Professional Development Day pictured above.

success in their chosen careers. Our vision is to ensure that Edgecombe-Martin County EMC is poised to bring the benefits of a work-ready workforce to our region by focusing on career fields where there are current and projected shortages of qualified workers.

Customer Appreciation Day

Each year, Edgecombe-Martin County EMC holds Customer Appreciation Day in October to show appreciation for our member-owners and to recognize the importance of cooperatives around the world. This year's Customer Appreciation Day will be held on Thursday, Oct. 6. We look forward to seeing you.!



Edgecombe-Martin County
Electric Membership Corporation
A Touchstone Energy Cooperative

**To report a loss of power or an
emergency after hours, please
call 1-800-690-0657.**

Edgecombe-Martin County EMC Toy Drive For “My Sisters House” Organization

Edgecombe-Martin County EMC will host a toy drive for the children at “My Sisters House” this Christmas season. You can bring your donations to our office from now until Thursday, Dec. 8.

My Sisters House is a nonprofit organization that provides support services for survivors of domestic violence and sexual assault services in Nash and Edgecombe counties.

We are collecting any new unwrapped toys for children (infant to 12 years of age).

There will be a collection table in the lobby of our main building for you to safely drop-off items during business hours. For other drop-offs or concerns, contact Monica Speight at 252-641-9502.



What is the No. 1 Cause of Outages?

At Edgecombe-Martin County EMC, providing you with safe, affordable and reliable power is our absolute top priority. We invest heavily in technologies and employees who pride themselves on keeping outages to a minimum. Despite our best efforts, however, power outages are sometimes unavoidable.

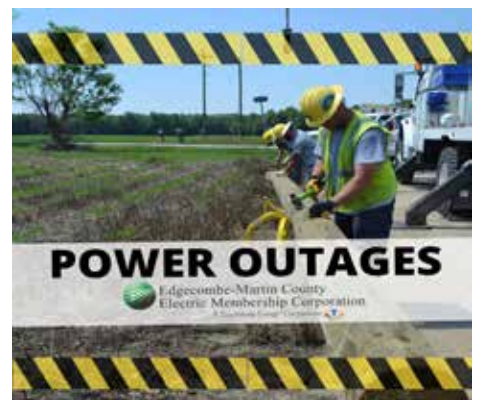
There are several reasons the power can go out. Weather is probably the most well-known reason for power outages. It's also the most common. Storms can knock down trees and tear down power lines, and strong winds or flooding can damage co-op equipment.

Trees falling on power lines or tree limbs coming into contact with power lines are frequent causes of power outages and “blinking lights” even in good weather. That’s why your cooperative has a dedicated, year-round vegetation management program to help protect electric reliability across 1,370 miles of power lines on Edgecombe-Martin County EMC’s system. Keeping trees away from power lines is an important safety precaution. Trees and other objects that come into contact with power lines can become energized, leading to shock or electrocution.

Animals and vehicle accidents are other frequent causes for outages. Squirrels, birds and snakes are

the usual culprits that come in contact with power lines or crawl into substation equipment. Vehicles and tractors occasionally hit poles or pull-down overhead power lines.

These causes of outages are incredibly dangerous. If a downed power line comes in contact with your vehicle, remain in your vehicle and call 911 as the ground around your vehicle may be energized.



Fall is a busy time, and October is a particularly eventful month with school, community and sports activities in full swing. It's also when all cooperatives celebrate National Co-op Month.

When I say Edgecombe-Martin County EMC celebrates Co-op Month, it really means we are celebrating you! After all, our co-op wouldn't exist without you, our members.

Our core business purpose is to serve as your electricity provider, but the larger mission of the co-op is to help make our corner of the world a better place. "Concern for community" is one of seven guiding principles that all co-ops share.

Similar to how our wires run through our service territory, our concern for community flows through all of our decisions, because being a co-op means being a responsible partner and good neighbor.

Edgecombe-Martin County EMC works to help our community thrive through initiatives led by our employees and local board that's comprised of neighbors who live right here in our community. Because we're local, we understand our community's unique needs and strive to help meet them.

We're proud to support local youth through our Youth Tour and scholarship programs. With your help, we offer Operation Roundup to provide assistance to our community's non-profit organizations. We partner with and support area foodbanks and other charitable organizations.

The word "cooperative" is close to "cooperation," meaning people working together towards a common goal—mutually benefiting one another and the larger community. That's the essence of the cooperative spirit. Our employees and member-elected board members are invested in the community in which live and serve.

Above all, as a co-op we put our members' priorities first. As your trusted energy partner, we



know that saving energy and money is important to you. That's why we have numerous programs in place to help.

We want to empower you to manage energy use at home. If you haven't already, I encourage you to take a moment and download our app, SmartHub. Through the app, you can conveniently monitor and manage your energy use. And we're of course here to help, so give us a call if you have questions about your energy bills.

Edgecombe-Martin County EMC is continuously examining ways to operate more efficiently while continuing to provide the highest level of friendly, reliable service you expect.

Cooperatively Yours,

Winston Howell

Winston Howell

High School Students: Apply for a Trip to Washington, D.C., Today

The application period for the 2023 Youth Tour to Washington, D.C., is now open! Edgecombe-Martin County EMC will select a rising junior or senior to represent us at next summer's Youth Tour in June.

Be a part of the 40-plus outstanding high school students selected from electric cooperatives across the state to travel to our nation's capital, Washington, D.C.

During the weeklong trip students will network with peers from across the country, meet members of Congress, visit national museums and historic landmarks, and grow in confidence and friendships. Students will learn about electric cooperatives and help run their own "H2O Co-op," where they can put the cooperative principles into practice.

As part of the Youth Tour experience, participants will have the opportunity to win one of three scholarships, including the prestigious Youth Leadership Council (YLC) Scholarship.

For more information, please contact Monica Speight at monicas@ememc.com or 252-823-2171.



Along The LINE

www.ememc.com

Board of Directors

Bert Pitt, President
Jimmie Jernigan, Vice Pres.
Wayne Harrell, Treasurer
Norman A. Roberson, Secretary
Billy Trevathan
Rejeanor Scott
Edward B. Simmons, Attorney

CEO

Winston T. Howell

Editor

Monica Speight

Hwy. 33 East, P.O. Box 188
Tarboro, NC 27886
252-823-2171 • 1-800-445-6486
Office Hours: 8 a.m.–5 p.m. (M–F)

After Hours Outage Reporting 1-800-690-0657

Payments after office hours and on holidays can be made at the kiosk under the drive-thru canopy, by calling our automated telephone service at 1-855-356-6358, placed in the night deposit box or you may choose to utilize the convenience of online bill-pay by logging on to www.ememc.com

October Rights-of-Way Schedule

In order to provide safe, reliable electrical service, we maintain the rights-of-way under and around our power lines. We do this through rights-of-way and vegetation management. This requires pruning, removing and cutting brush to prevent vegetation from interrupting your electric service.

Throughout October, Xylem Tree and Asplundh experts will be trimming in the Hillsdale neighborhood Rocky Mount, Benson-Battleboro circuits and various hotspots on the system.

