

Along the LINE

FEBRUARY 2024

For members of
Edgecombe-Martin County EMC



2023 Annual Meeting

Join us for the 88th Annual Meeting of Members

Edgecombe-Martin County EMC invites members to our 87th Annual Meeting, Thursday, March 28, 2024 at the Cooperative from 11:00 a.m. until 6 p.m.

The Annual Meeting of Members is designed to deliver information to the membership concerning state and national issues that affect the co-op, financial data from the previous year, and our financial outlook for the year ahead.

For the past three years, Edgecombe-Martin County EMC's Annual Meeting of Members has embraced a drive-through setup, initially necessitated by the COVID pandemic. This adjustment brought about a new type of annual meeting. Your feedback and robust participation have demonstrated your appreciation for this convenient method of expressing your views on the cooperative's operations.

This year, our annual meeting will once again be a drive-through format, running from 11 a.m. to 6 p.m., with the business meeting scheduled at 6 p.m. This year, our annual meeting is taking a different turn. Instead of the warehouse dock, we'll be gathering in the welcoming atmosphere of our main office lobby, starting at 6 p.m.

Please enter through the receiving entrance. Members will be able to complete and turn in their ballots and will be entered in the prize drawing and you do not have to be present to win.



Ronald McDonald House®
Eastern North Carolina

You can make an impact at the Ronald McDonald House of Eastern North Carolina by donating items on the House's wish list at our Annual Meeting.

Please remember the House is just like your home and can use many of the same items you use each day.

For the health and safety of House guests and volunteers, items should be new. Due to stringent health codes, please do not forget to check expiration dates.

Listed below are the most needed items at the Ronald McDonald House of Eastern North Carolina.

- **Individual Chips/Snacks**
- **Fruit Cups**
- **Tea Bags**
- **Paper Plates/Bowls**
- **Disposable Utensils**
- **Toilet Paper**
- **Easy Mac**
- **Cooking Oil**

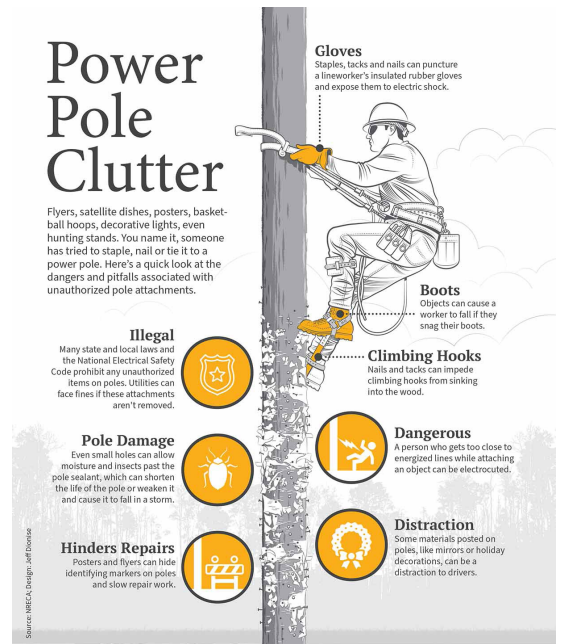
Do Not Attach Anything to Utility Poles

Let's talk about something important - those utility poles we see every day. They're not just decorative; they play a vital role in keeping our community powered up.

Our incredible line crews are out there 24/7, rain or shine, ensuring our power stays on and everything runs smoothly. Attaching anything to those utility poles can be super risky. Homemade signs, banners, brackets – you name it, it can cause serious hazards for our hardworking line technicians.

Imagine this: a lineman needs to climb a pole to fix something or restore power, and suddenly there's a obstacle course of signs and flags in their way. Even a tiny nail can cause trouble, from snagging clothes, putting holes in the safety gear, to risking falls or worse.

Let's all do our part to make their job a little easier. Avoiding attachments to utility poles ensures quick and safe access for our line crews, allowing them to continue their essential work efficiently. Your commitment to this simple rule contributes to a safer environment for everyone and helps maintain the uninterrupted power supply we all rely on. Together, we can keep the lights on and our community thriving!



Middle Schoolers, Dont Miss the Opportunity To Apply For a Touchstone Energy Sports Camp Scholarship to Attend Basketball Camp

Embark on a hoop dreams adventure with Edgecombe-Martin County EMC's exclusive scholarships for young ballers!

Young men can apply for a scholarship to attend the Carolina Basketball Camp which will be held June 22-26 at the University of North Carolina at Chapel Hill. Young women can apply for a spot at the Wolfpack Women's Basketball Camp in June at N.C. State University in Raleigh.

The scholarships cover all expenses at the overnight camps, which provide a glimpse into life on a college campus. Campers stay overnight in dorms, learn fundamental skills that will help them excel on and off the court and receive individual and group instruction from Division 1 coaches to enhance their basketball and team-



Touchstone Energy®
Sports Camp Scholarships

building abilities.

To apply, students must be a sixth or seventh grade student during the 2023-2024 school year. Ready to slam dunk your way into an unforgettable summer? Dive into the details and toss your name into the ring by visiting ncelectriccooperatives.com/sports-camps. Lace up those sneakers, because the ball is in your court!

lines

FROM Lead Maintenance Technician
STEVE LEWIS

"How long is it going to take?" Those are familiar words to all who work in the electric industry. It's a phrase I've been asked thousands of times in my career. I've been asked by phone, through car windows, from front porches, sidewalks, bicycles, gas pumps, and many more places. It's the first thing people think when the lights go out. It doesn't take long sitting in the dark to realize how dependent we are on electricity. How much it makes our lives better and easier.

As a line technician, it's always a good feeling to help people get those lights back on. I can remember times when I've been on storm or extended outages re-energizing neighborhoods and heard people in their homes cheering as their lights came on for the first time in days. No matter how tired I am or how long I've been working, that feeling will always make it worthwhile.

But what does it take to get those lights back on? Most people will never get to experience or witness the work that goes into restoring outages. Hopefully after reading this, you will have a better understanding of the process and the work that Edgecombe-Martin County EMC line crews are doing to restore your power.

Electricity travels a long journey before reaching your home. It starts at a power plant, where various fuels like nuclear, natural gas, diesel, coal, hydro, wind, , or solar are used to generate power at voltages below 30,000 volts. The voltage is then "stepped up" in the power plant's substation to 345,000 volts or higher, traveling through transmission lines to another substation. There, the voltage is stepped down to 69,000 volts or less and sent to local substations, reaching your home at 7,200 or 14,400 volts. Finally, a transformer outside your home further steps down the voltage to 120/240 volts for your appliances and other devices.

On Edgecombe-Martin County EMC's extensive system, spanning 1,515 miles of line and thousands of poles, breakers are crucial. They help minimize exposure, allowing the system to be divided into sections, limiting outage sizes. Breakers also protect line equipment, causing the familiar blinking of lights as they attempt to clear faults before shutting down permanently.

Now that the lights have blinked, your breaker has opened, and the power is off. So what happens?

At 6:50 p.m., I receive a call about an outage. Next, I retrieve my I-Pad to gather additional details about the power outage. Employing specialized software for fault information and outage prediction, we can efficiently

identify the outage's location, ultimately minimizing downtime. By 7 p.m., I call and get assistance from another line technician and embark on a drive. Upon arrival at 7:45 p.m., we inspect the line, searching for causes like fallen trees, equipment failure, or other issues.

By 8:30 p.m., if the cause is found, safety procedures kick in, including isolating and grounding the line. A safety briefing ensures awareness of hazards and procedures. At 9 p.m., with safety measures in place, we begin the repair process, which may involve removing a fallen tree, a meticulous task due to the potential dangers of shifting trees and tensioned power lines.

At 10:30 p.m., after clearing the tree, if the pole is off-road, climbing becomes necessary. Parts are replaced, and the line technician ascends to the top, utilizing a handline for efficiency. By 11:45 p.m., repairs are complete, and the line technician heads to the breaker for clearance to re-energize.

At 12:05 a.m., power is restored, signaling the end of the outage. Keep in mind that restoration times vary depending on the cause of the outage. By 1 a.m., we return home, having completed the restoration process safely.

During a significant outage impacting numerous members, our line technician is in constant communication with office personnel, providing outage information for dissemination through our social media channels. We refrain from providing estimated time of restoration due to the multitude of variables that can influence the restoration process.

Power outages, whether brief or prolonged, can be stressful. I hope I've shed light on the restoration process to give you insight while you wait. Rest assured, our line crews at Edgecombe-Martin County EMC are working diligently to restore power swiftly and safely. We're not just your utility provider; we're part of your community, facing the same challenges. Our commitment remains unwavering—to deliver safe, affordable, and reliable electricity around the clock, every day of the year.

Cooperatively,

Steve Lewis

Steve Lewis

First Responder and Farm Safety Training

Edgecombe-Martin County EMC will host a First Responder and Farm Safety Training on Tuesday, February 27, at 6:00 p.m.

This training is provided at no cost by Edgecombe-Martin County EMC. Edgecombe-Martin County EMC understands the importance of teaching electrical safety.

The goal of our First Responders and Farm Safety Electrical Hazards Training is to help first responders and farm equipment operators work safely in emergency situations where electric utility lines are involved. Firefighters, police, EMTs and others, who are typically first on the scene in an emergency, face the greatest risk from electrical contacts and fires. It's also important that those who live and work on farms know the risks and understand how they can unknowingly come into contact with electricity. Understanding the potential dangers and learning how to deal with them correctly makes everyone safer. The training is intended for all first responders and farm equipment operators and will cover a variety of electrical hazards that you could encounter.

Dinner will be provided. Please take advantage of this opportunity to update your department's training. RSVP to Monica Speight at (252) 641-9502 or monicas@ememc.com. Please provide an estimated number of attendees by Friday, February 16.



Along The LINE

ememc.com

Board of Directors

Bert Pitt, President
Jimmie Jernigan, Vice Pres.
Wayne Harrell, Treasurer
Norman A. Roberson, Secretary
Billy Trevathan
Rejeanor Scott
Harold Thompson
Edward B. Simmons, Attorney

CEO

Winston T. Howell

Editor

Monica Speight

Hwy. 33 East, P.O. Box 188
Tarboro, NC 27886
252-823-2171 • 1-800-445-6486
Office Hours: 8 a.m.–5 p.m. (M–F)

After Hours Outage Reporting 1-800-690-0657

Payments after office hours and on holidays can be made at the kiosk under the drive thru canopy, by calling our automated telephone service at

1-855-356-6358, placed in the night deposit box or you may choose to utilize the convenience of online bill-pay by logging on to ememc.com

February Rights-of-Way Schedule

In order to provide safe, affordable, and reliable electrical service, we maintain the rights-of-way under and around our power lines. We do this through rights-of-way and vegetation management. This requires pruning, removing, and cutting brush to prevent vegetation from interrupting your electric service.

Throughout February, Burford's Tree will utilize the sky trim, buckets and bushhogging equipment, ----- area, and various hotspots on the system.

Examples of trimming methods

Flat Top Trimming



Trees are cut 15 feet below the lowest electric line.

Side Trimming



Trees are cut at least 15 feet from the center of the utility pole.

"L" Trimming



Trees are cut 15 feet from the neutral.



Edgecombe-Martin County
Electric Membership Corporation
A Touchstone Energy® Cooperative