



# Along the LINE

APRIL 2026

For members of  
Edgecombe-Martin County EMC

## Carson Keeter Joins EMC as Line Technician Intern

We are proud to welcome Carson Keeter to the Edgecombe-Martin County EMC family, a young professional whose roots in the cooperative world run deep.

A 2025 graduate of NECP, Carson went on to complete the Line Technician program at Nash Community College and has now joined EMC-EMC as an line technician intern, beginning his career serving the communities




he grew up in. His connection to electric cooperatives is more than professional—his mother also works for an electric cooperative, giving him a lifelong appreciation for the cooperative difference.

While in high school, Carson attended our Line Camp, a hands-on academy that introduces students to the line technician career and the skills needed to keep the lights on.

He also represented Halifax EMC on the 2025 Youth Tour, a weeklong leadership experience in Washington, D.C., where he joined students from across the state to explore our nation’s history, visit landmarks like Arlington National Cemetery and the U.S. Capitol, meet legislators, and learn more about civic engagement.

We’re excited to see Carson bring his passion for service and strong cooperative foundation back home to serve our members.



### Holiday Closing

Edgecombe-Martin County EMC will be closed on Friday, April 3, in observance of Good Friday.

After-hours and holiday payments can be made using the following options:

- Kiosk under the drive-thru canopy
- Calling our automated telephone service at 1-844-967-2463
- Placed in the night deposit box
- Online bill-pay by logging on to ememc.com

# Calling All Educators: Bright Ideas Grants Are Back!

Have a classroom project you've been dreaming about? Edgecombe-Martin County EMC is excited to kick off the Bright Ideas Education Grant program for the 2026–27 school year, with applications opening April 1.

Bright Ideas grants are designed to support creative, hands-on learning that sparks curiosity and enhances student engagement. From science experiments to innovative lesson tools, these grants help turn great ideas into meaningful learning experiences.

K–12 teachers in all subject areas are encouraged to apply — whether you're working solo or collaborating with a team. Applications are accepted online from April 1 through Sept. 15, and there's a bonus for early planners! Educators who apply by Aug. 15 will be entered into a drawing for one of five \$100 Visa gift cards.

Ready to bring something new to your classroom? Learn more and apply at [ncbrightideas.com](http://ncbrightideas.com). Your next big idea could make a big difference!



*2025 Bright Ideas winner Kimberly Long from Edgecombe Early College with Edgecombe-Martin County EMC representative Monica Speight.*

---

## Powering Our Community: Line Technician Appreciation – April 13

Every day, Edgecombe-Martin County EMC serves our members through the combined efforts of employees across every department. On April 13, we take time to spotlight a group whose work doesn't go unnoticed—our line technicians.

Line Technician Appreciation Day, recognized nationally on April 13, honors the men and women who build, maintain and protect the electric system that powers our homes, schools and businesses. When storms roll through, temperatures drop or emergencies happen after hours, our line technicians are the ones answering the call—often in challenging and unpredictable conditions.



Their work goes far beyond restoring outages. Line technicians inspect and strengthen our system, replace aging infrastructure and solve complex electrical issues involving high-voltage equipment. This demanding job requires specialized training, constant awareness of safety and a commitment to doing things the right way—every time.

Their dedication doesn't stop at our service territory. When other cooperatives need help after major storms or disasters, our crews are often among those who travel to assist, living out the cooperative principle of Cooperation Among Cooperatives.

While every employee at Edgecombe-Martin County EMC plays a role in serving our members, today we proudly recognize our line technicians for their skill, professionalism and dedication to keeping the power reliable. If you see a line technician at work, know that their efforts are helping keep our community connected and powered—no matter the circumstances.

# lines

FROM Winston Howell  
C.E.O.

Across the U.S., the demand for power is climbing at one of the fastest rates in decades. As the economy becomes more reliant on electricity and data centers continue to sprout up in many parts of the country, electric cooperatives are preparing to meet the challenges that skyrocketing demand brings.

The North American Reliability Corporation—the watchdog for the U.S. electric grid—recently released the 2025-2026 winter reliability assessment, which echoed other recent reports, including longer-term outlooks that expect sufficient energy resources during normal conditions but potential supply shortfalls and outages under more intense weather conditions.

Extreme weather coupled with additional factors that are driving increased demand creates challenges for electric utilities, including cooperatives, in their mission to provide reliable power around the clock.

Several key factors are driving increased demand—including economic growth, expanded manufacturing, data center development and increased electrification in transportation. Together, these trends are reshaping how much electricity we consume and how quickly utilities like Edgecombe-Martin County EMC must adapt to meet future needs.

Those national trends are already playing out locally. In 2025 alone, Edgecombe-Martin County EMC fielded 34 requests from economic developers seeking information about electric service availability, capacity and long-term power needs. These requests reflect growing interest in new businesses, expanded facilities and future development across our service area—each bringing additional demand that must be carefully planned. As economic development activity increases, so does the need for reliable, resilient electric infrastructure to support growth both now and in the years ahead.

More homes and businesses are transitioning to electricity for home heating, water heating and transportation. EVs are becoming more common on the road, and many states are offering incentives to help consumers make the switch. Additionally, electric heat pumps are replacing traditional furnaces in many homes due to their efficiency. These transitions mean more energy use and pressure placed on our electric grid.

Data centers are the major contributor to rising demand. As AI, cryptocurrency and cloud computing technologies grow, the need for data processing and storage has skyrocketed. Data centers require huge amounts of power to operate servers and cooling systems 24/7. Tech companies are building new facilities nationwide—many of which are in electric cooperative-served areas—and these regions are experiencing multi-year surges in electricity demand as a result.

Manufacturing growth is also contributing to higher electricity use. As businesses expand and new industries take root, especially in rural and suburban areas, the demand for reliable, high-capacity power is increasing. The resurgence of domestic manufacturing has led to major facility construction. These facilities often require substantial energy loads, and many operate continuously to keep production lines running. This growth brings jobs and investment, but it also puts new pressures on the electric grid.

Population growth and housing development are also contributing to rising demand in many regions, and everyday life is becoming more energy dependent, too. Smart appliances, connected devices, home offices and entertainment systems are adding to overall consumption, even as efficiency improves.

While increased demand presents new challenges for electric utilities, it also has the potential to create significant opportunities for co-ops and the communities they serve, such as job growth, steady revenue and improved infrastructure. Electric co-ops are responding by planning carefully for the future—investing in grid modernization and offering programs and services to help co-op members conserve energy.

Edgecombe-Martin County EMC is taking proactive steps to help meet growing electricity demand while maintaining reliability for our members. One key initiative includes future ownership of a 16.55% share of a planned 1,360-megawatt hydrogen-capable combined-cycle natural gas plant in Person County, developed in partnership with North Carolina Electric Membership Corporation (NCEMC) and Duke Energy. Once online, NCEMC will own approximately 16% of the electricity produced—about 225 megawatts (MW) of capacity—providing flexible, dependable generation to help serve cooperative members during periods of high demand. In addition to securing future generation, we also use Conservation Voltage Reduction (CVR) technology, which allows us to safely optimize voltage levels on our distribution system. CVR helps reduce overall energy consumption and shave peak demand, easing strain on the electric grid while delivering efficiency benefits to our members.

Electricity powers nearly every aspect of today's economy, and its role will only grow stronger. As electrification accelerates, long-term planning becomes more important than ever.

Edgecombe-Martin County EMC is ready to meet rising demand in our local communities. Through innovation, investment and collaboration, we are preparing for a more reliable and resilient energy future.

*Winston Howell*

# Statement of Non-discrimination

In accordance with Federal civil rights law and U.S. Department of Agriculture (USDA) civil rights regulations and policies, the USDA, its Agencies, offices, and employees, and institutions participating in or administering USDA programs are prohibited from discriminating based on race, color, national origin, religion, sex, disability, age, marital status, family/parental status, income derived from a public assistance program, political beliefs, or reprisal or retaliation for prior civil rights activity, in any program or activity conducted or funded by USDA (not all bases apply to all programs). Remedies and complaint filing deadlines vary by program or incident.

Persons with disabilities who require alternative means of communication for program information (e.g., Braille, large print, audiotape, American Sign Language, etc.) should contact the responsible Agency or USDA's TARGET Center at (202) 720-2600 (voice and TTY) or contact USDA through the Federal Relay Service at (800) 877-8339. Additionally, program information may be made available in languages other than English.

To file a program discrimination complaint, complete the USDA Program Discrimination Complaint Form, AD-3027, found online at How to File a Program Discrimination Complaint and at any USDA office or write a letter

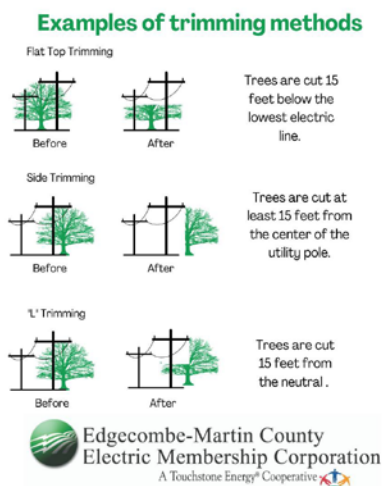
addressed to USDA and provide in the letter all of the information requested in the form. To request a copy of the complaint form, call (866) 632-9992. Submit your completed form or letter to USDA by: (1) mail: U.S. Department of Agriculture, Office of the Assistant Secretary for Civil Rights, 1400 Independence Avenue, SW, Washington, D.C. 20250-9410; (2) fax: (202) 690-7442; or (3) email: [program.intake@usda.gov](mailto:program.intake@usda.gov).

USDA is an equal opportunity provider, employer, and lender.

## April Rights-of-Way

In order to provide safe, affordable, and reliable electrical service, we maintain the rights-of-way under and around our power lines. Maintaining these rights-of-way is critical to prevent vegetation from interrupting service. Our vegetation management efforts include pruning, brush cutting, and removing trees and other growth that could pose a risk to the system. These proactive measures help us minimize outages and improve overall reliability for our members.

Throughout April, Lucas Tree Experts will utilize the sky trim, buckets and bushhogging equipment, in the Hwy 97, Logboro, Spivey road areas, and various hotspots on the system.



## Along The LINE

[ememc.com](http://ememc.com)

### Board of Directors

- Bert Pitt, President
- Jimmie Jernigan, Vice Pres.
- Wayne Harrell, Treasurer
- Norman A. Roberson, Secretary
- Billy Trevathan
- Rejeanor Scott
- Harold Thompson
- Edward B. Simmons, Attorney

### CEO

Winston T. Howell

### Editor

Monica Speight

Hwy. 33 East, P.O. Box 188  
 Tarboro, NC 27886  
 252-823-2171 • 1-800-445-6486  
 Office Hours: 8 a.m.–5 p.m. (M–F)