



Along the LINE

JUNE 2025

For members of
Edgecombe-Martin County EMC

Holden Lilley Awarded Scholarship to Train with Top Basketball Program

One local student will be training alongside some of the best college athletes and coaches in the country this month, thanks to Edgecombe-Martin County EMC's Touchstone Energy Sports Camp Scholarship program. These scholarships give middle school students a once-in-a-lifetime opportunity to grow their athletic abilities while also developing leadership skills and building lasting friendships.

Holden Lilley, a rising 6th grader at Bear Grass Charter School, was selected to attend the Carolina Basketball School — hosted by the University of North Carolina in Chapel Hill and led by Tar Heels Head Coach Hubert Davis.

"Holden is an outstanding student, athlete, and community member," said Monica Speight, manager of Communication at Edgecombe-Martin County EMC. "We are proud to partner with North Carolina universities

to help provide such a unique leadership and learning experience for our local students and future leaders."

During the weeklong camp, Holden will join more than 50 electric cooperative scholarship recipients from across North Carolina. Students stay overnight in college dorms, attend practices led by collegiate coaching staff, and experience what it's like to be a student-athlete on a university campus. Campers receive direct instruction on basketball fundamentals while also learning valuable life skills like communication, teamwork, and goal setting — skills that serve them well both on and off the court.

Each year, Edgecombe-Martin County EMC awards one scholarship for a rising sixth or seventh grade boy to attend the UNC-Chapel Hill camp and one for a rising sixth or seventh grade girl to attend the Wolfpack Women's Basketball Camp at NC State University in Raleigh. While no applications were received for the NC State camp this year, we encourage interested students and families to apply in the future. The application window typically opens in December and runs through March each year.

Edgecombe-Martin County EMC is proud to support programs that empower our youth and promote educational growth.

Congratulations to Holden for earning this exciting opportunity and representing our community at basketball camp this summer!



Monica Speight, Manager of Communications at Edgecombe-Martin County EMC, with scholarship winner Holden Lilley and his current principal, Spencer Pake.

2025 Poletop and Bucket Rescue Training

In April, Edgecombe-Martin County EMC's line technicians took part in our annual Pole Top and Bucket Rescue training — an essential part of OSHA's required safety preparedness program.

This hands-on training ensures that each technician is ready to act quickly and effectively in an emergency. During the Pole Top Rescue scenario, technicians must respond to a simulation where a coworker is rendered unconscious at the top of a 20-foot utility pole. Fully geared and under time pressure, the technician radios for help, climbs the pole, secures and lowers a 170-pound mannequin and begins life-saving procedures — all within a five-minute window.



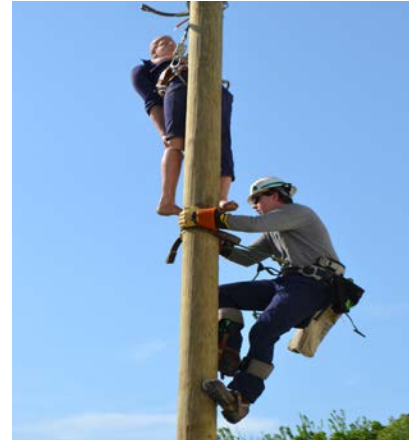
Will Scott

The training also includes the Bucket Rescue simulation, where a technician must safely lower an "injured" coworker from the bucket of a line truck and begin CPR. While we hope these skills are never needed in real

life, staying prepared through regular training can make all the difference in a crisis.

We'd like to give a shoutout to a few standout performances this year! Tyler Perkins completed the pole top rescue in just 2 minutes and 47 seconds, followed closely by Will Scott with a time of 2 minutes and 59 seconds. In the bucket rescue portion, Will Scott led the way again with 52.21 seconds, and Dylan Craft followed closely at 52.50 seconds.

We're proud of all our line technicians for taking safety seriously and always striving to be ready for whatever the job may bring.



Tyler Perkins

Changes to Security Deposit Refunds

Edgecombe-Martin County EMC is committed to continuously improving the way we serve our members, and that includes streamlining how we handle security deposits.

In the past, when members qualified to have their deposits refunded — typically after maintaining a good payment history for two years — we issued a check by mail. While the deposit was held, it also earned interest, which was included in the refund.

Beginning March 1, 2025, the Board of Directors has approved a change to this process. The interest rate on all deposits has been set to 0.00%, meaning deposits will no longer earn interest while being held. Additionally, instead of issuing a refund check, we will now apply the deposit as a credit directly to the member's account. This credit will be used to offset future electric bills until it is fully applied.

Deposits for residential and general service accounts are eligible for refund after two years of good pay history. Security light deposits will be refunded after two years of active security light service, and there is no credit requirement for the security light portion.

These updates are designed to make the process more convenient for our members and reflect our ongoing commitment to excellent service. If you have questions about your deposit status or would like to review your account, please don't hesitate to contact our office.

Utility-scale Battery Energy Storage to Strengthen Local Grid

Edgecombe-Martin County EMC has completed the installation of cutting-edge battery energy storage technology, adding local energy resources that will enhance grid reliability for members.

Edgecombe-Martin County EMC is committed to driving innovative energy solutions that help power a brighter future for our members and communities. Delivering reliable, affordable power remains a top priority for Edgecombe-Martin County EMC, and these utility-scale battery energy storage projects further demonstrate our ongoing commitment to meeting the evolving needs of our members.

The new battery storage project is integrated into an existing Edgecombe-Martin County EMC electric substation and is part of a larger initiative by North Carolina's electric cooperatives. Seventeen substation batteries have been deployed in cooperative territories across the state since 2022. Collectively, the batteries provide 90MWs of power and are discharged during times of peak demand for power.

These battery projects support grid reliability because they can be dispatched in real time to meet demand. This capability, known as dispatchability, is especially important as the energy landscape shifts, with traditional resources retiring and being replaced by more variable resources that inherently depend on weather conditions.

Additionally, the location has been strategically chosen by Edgecombe-Martin County EMC because it



is situated in an area with a high concentration of utility-scale solar energy. Solar, as an energy resource, is most productive when demand for energy is low. Being able to store solar output for use when demand is high improves the efficiency of the resources and grid.



As a member-owned and governed utility, we will continue to lead the integration, management and optimization of resources and technologies that benefit our community and local members — now and in the decades to come.

Beyond substation batteries, Edgecombe-Martin County EMC and North Carolina's network of electric cooperatives have worked together to deploy innovative energy technologies to enhance reliability and local grid resilience. These efforts include community solar, microgrids, demand response programs and solar plus storage projects, all aimed at ensuring North Carolina's electric cooperatives can continue to deliver affordable, reliable power to members while also pursuing long-term sustainability goals.

Cooperatively,

Winston Howell
Winston Howell

Inform Your Co-op Before Adding Load to Your Service

Don't forget to let Edgecombe-Martin County EMC know about any changes that have been made to add load to your service.

With ongoing improvements in electric vehicle technology and affordability, an increasing number of Americans are likely to transition to electric vehicles.

If you own or are considering the purchase of a plug-in electric vehicle, please let us know so that we can ensure our equipment is set up to properly handle the increased load and help you save energy and money!

Due to advancements in technology, modern farms and agricultural operations work far differently than those a few decades ago. These changes

include the sensors, devices, machines, and information technology. We need to be informed of any changes or upgrades you have made to your operations since last year. It is possible that we may need to make changes to our distribution system to allow for any added load, such as additional bulk barns or grain dryers.

Call the Cooperative at 1-800-445-6486 or 252-823-2171 to let us know of any change to your account(s).



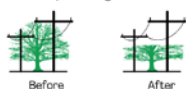
Edgecombe-Martin County EMC offers a special EV rate for owners who use most of their energy overnight when charging their vehicle. The co-op also provides a \$200 rebate for members with an electric vehicle to help with electric service improvements to charge their EV.

June Rights-of-Way

In order to provide safe, reliable electrical service, we maintain the rights-of-way under and around our power lines. We do this through rights-of-way and vegetation management. This requires pruning, removing, and cutting vegetation to prevent interruption of your electric service.

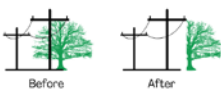
Examples of trimming methods

Flat Top Trimming



Trees are cut 15 feet below the lowest electric line.

Side Trimming



Trees are cut at least 15 feet from the center of the utility pole. As well as danger trees outside the 15 feet.

'L' Trimming



Trees are cut 15 feet from the neutral.

Throughout June, Burford's Tree will utilize the sky trim, buckets and bushhogging equipment in the Kingsboro area in Tarboro, as well as various hotspots on the system.

Along The LINE

ememc.com

Board of Directors

Bert Pitt, President
Jimmie Jernigan, Vice Pres.
Wayne Harrell, Treasurer
Norman A. Roberson, Secretary
Billy Trevathan
Rejeanor Scott
Harold Thompson
Edward B. Simmons, Attorney

CEO

Winston T. Howell

Editor

Monica Speight

Hwy. 33 East, P.O. Box 188
Tarboro, NC 27886
252-823-2171 • 1-800-445-6486
Office Hours: 8 a.m.–5 p.m. (M–F)

After Hours Outage Reporting 1-800-690-0657

Payments after office hours and on holidays can be made at the kiosk under the drive thru canopy, by calling our automated telephone service at 1-855-356-6358, placed in the night deposit box, or you may choose to utilize the convenience of online bill-pay by logging on to ememc.com